

Fudong Machinery  
Manufacture (HK) Co, Ltd



**KF FLANGES &  
DN FLANGES  
FITTINGS**

# KF FLANGE & TUBE

Clamp flanges are designed and manufactured in accordance with International Organization for Standardization specifications, and are common with other current international brand specifications (KF-ISO specifications)

Standard material specification Stainless steel 304/L, 316L and magnesium aluminum alloy (AL6061)

The quick and easy design of the KF flange allows the user to quickly and repeatedly assemble and disassemble parts.

The corresponding range of flange diameter is from 1/2"~2".

The KF flange adopts the corresponding aluminum alloy (stainless steel) clamps, so that users can easily assemble and disassemble without tools.

The 15-degree inclined surface design on the flange side corresponds to the clamp and provides a consistent locking force, so that the center ring O-ring gasket is firmly fixed between the flanges, thereby achieving a stable sealing function.

Vacuum pressures can range as low as  $1 \times 10^{-8}$  Torr and bake temperatures up to 200° C. The product range also provides corresponding adapters for conversion of different specifications, please refer to the adapter product series.

## Cleaning and Packaging

All welding points of the product are 100% leak tested. The product is cleaned by ultrasonic cleaning equipment, and the water quality is deionized water that meets the requirements of semiconductors. Packaging environment The combination and packaging of the overall product are done in a high clean environment to ensure the cleanliness of the product.

## Specification:

APPLICATION:VACUUM

MATERIAL:304/L;316LN,AL 6061

Flange size range:KF10-KF50

Standard pipe diameter size range:1/2"-2"

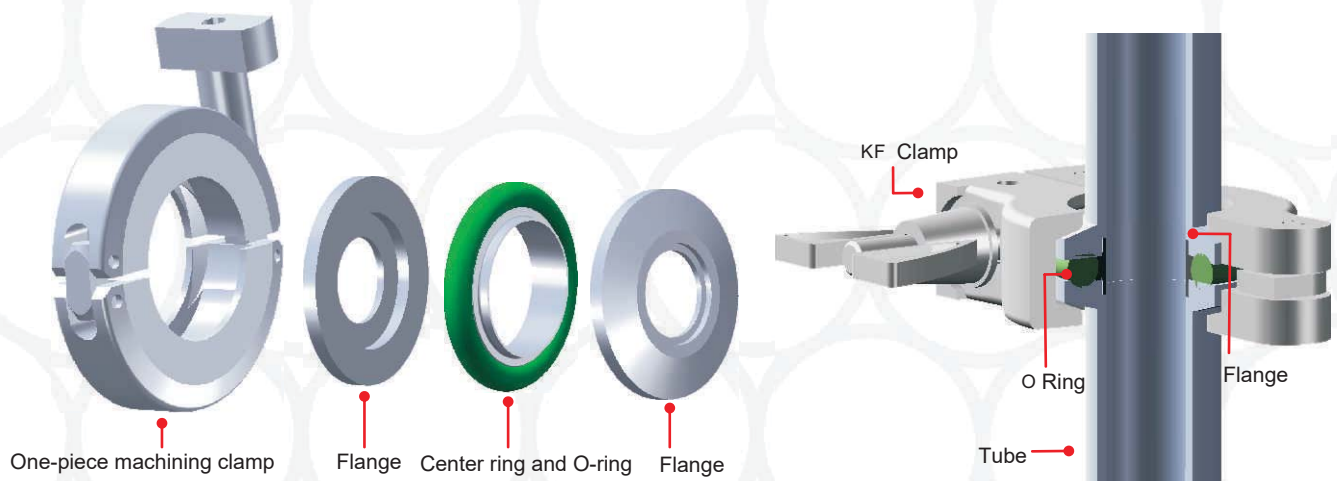
Pipe surface:sandblasting

Pressure range:

760 Torr ~ $1 \times 10^{-8}$  Torr

Gasket material: OFHC oxygen-free copper or silver plated

Temperature range: Less than 200 degrees Celsius (less than 150 degrees Celsius for long-term operation)



**KF  
DN**

# KF法兰与管件

卡箍式法兰依照国际标准化组织规格设计制造，与现行国际其他厂牌规格通用 (KF-ISO规格)。

标准材质规格不锈钢304/L，316L与镁铝合金(AL6061)。

KF法兰快速与简易的设计，可方便使用者迅速并可重复的组合与拆解零件。

法兰对应范围管径由1/2"~2"。

KF法兰采用对应的铝合金(不锈钢)卡箍，让使用者可不需要工具即可方便做组装与拆卸。

法兰侧面的15度角斜面设计，与卡箍对应，并提供一致性的锁附力道，让中心圈O型环垫片稳固的固定于法兰之间，进而达到稳定的密封功能。

真空压力的范围可低至 $1 \times 10^{-8}$  Torr并可烘烤温度最高为摄氏200度。

产品范围也针对不同规格的转换，提供对应的转接头，请参考转接头产品系列。

## 标准规格

应用：高真空

材质：304/L，316L，镁铝合金AL6061

法兰尺寸范围：KF10~KF50

标准管件径尺寸范围：1/2"~2"

管件表面处理：喷砂

压力范围：760 Torr ~  $1 \times 10^{-8}$  Torr

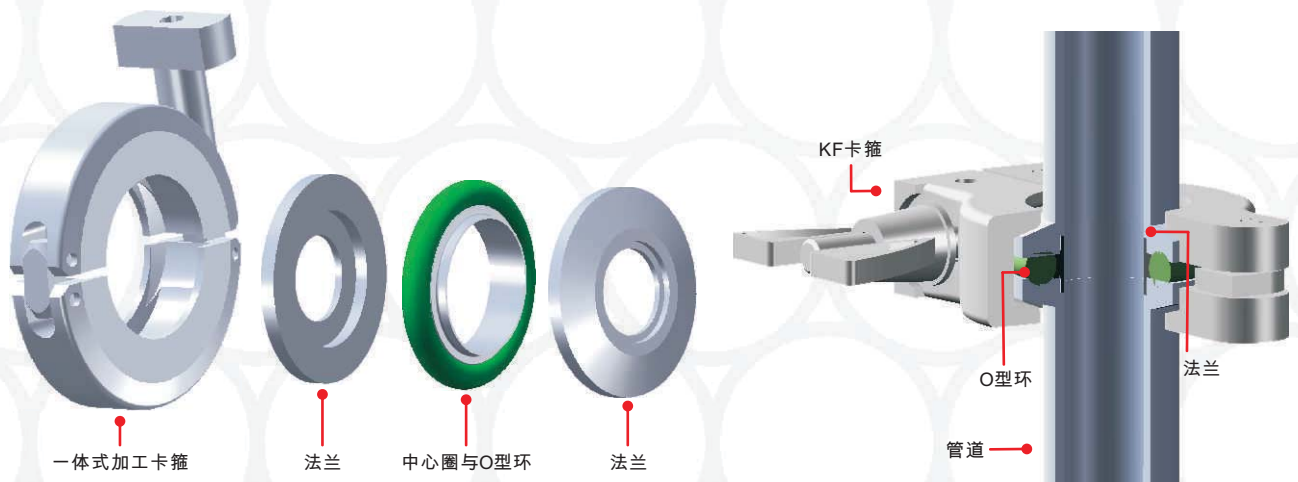
密封垫片材质：FKM，Buna-N或硅胶

温度范围：小于摄氏200度(长期操作小于摄氏150度)

## 清洁与包装

产品所有的焊接点100%的测漏检验，产品清洗经过超音波清洗设备清洗，水质使用合乎半导体要求去离子水。

包装环境于高洁净环境做整体产品的组合与包装，确保产品的洁净度。



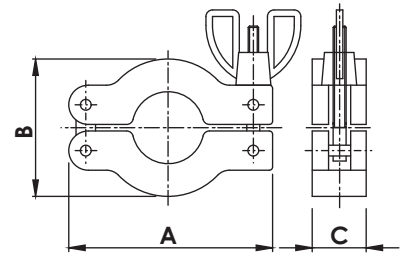
KF  
DN

# KF Flanges & Fittings

## KF 卡箍 型式1(两点式) KF WING-NUT CLAMPS TYPE 1

本体为铸造成型 The body is cast

(卡箍强度：次强) (clamp strength: second strongest)

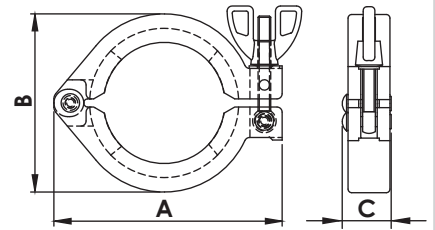


Catalogue PN	Size	A	B	C
KF-WC1-1016	KF10/16	62.30	41.00	16.50
KF-WC1-25	KF25	72.40	54.00	16.50
KF-WC1-40	KF40	89.70	69.00	16.50
KF-WC1-50	KF50	114.00	90.00	21.50

## KF 卡箍 型式2(单点式) KF WING-NUT CLAMPS TYPE 2

本体为铸造成型 The body is cast

(卡箍强度：尚可) (clamp strength: common)

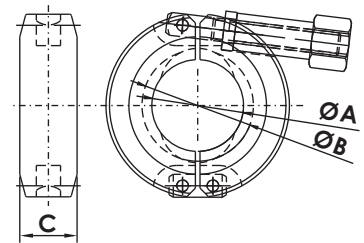


Catalogue PN	Size	A	B	C
KF-WC2-1016	KF10/16	62.70	41.40	19.30
KF-WC2-25	KF25	72.00	53.10	19.30
KF-WC2-40	KF40	90.00	70.20	19.30
KF-WC2-50	KF50	113.40	93.40	22.80

## KF CNC SS304 CLAMPS

\*CNC MACHINED CLAMP MADE BY STAINLESS 304 FOR EXTRA RIGID STRENGTH AND DURABLE

\*INTEGRAL LATCHING APPARATUS CAN PREVENT UNINTENTIONAL OPENING

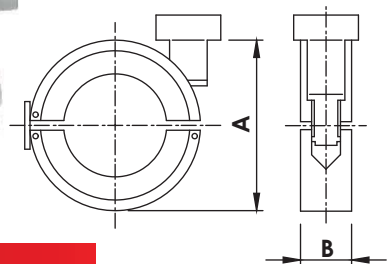


Catalogue PN	Size	ØA	ØB	C
KF-CC-1016-04	KF10/16	25.40	30.80	15.90
KF-CC-25-04	KF25	34.12	40.94	15.90
KF-CC-40-04	KF40	49.40	55.70	15.90
KF-CC-50-04	KF50	69.00	75.60	15.90

## 一体式加工卡箍 KF CNC MACHINED CLAMPS

本体为圆棒加工成型 The body is processed and formed from a round bar

(卡箍强度：最强) (clamp strength: strongest)



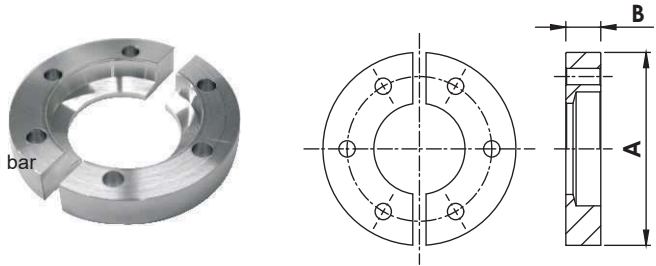
Catalogue PN	Size	A	B
KF-CC-1016-AL	KF10/16	50.80	15.90
KF-CC-25-AL	KF25	63.60	15.90
KF-CC-40-AL	KF40	74.70	15.90
KF-CC-50-AL	KF50	101.60	15.90



# KF Flanges & Fittings

## KF 环颈型卡箍 KF BULKHEAD CLAMP

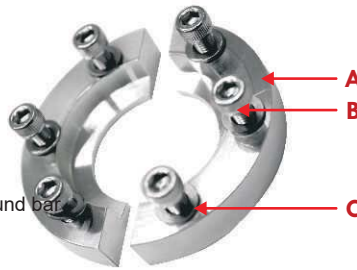
本体为圆棒加工成型 The body is processed and formed from a round bar  
(卡箍强度：最强) (clamp strength: strongest)  
优势：可接受最低直部，体积最小化  
Advantages: lowest straight part acceptable, minimal bulk



Catalogue PN	Size	A	B	Bolt Hole Size	No of Bolt Holes
KF-BC-16	KF16	50.80	9.20	5.30	6
KF-BC-25	KF25	60.30	9.90	5.30	6
KF-BC-40	KF40	74.60	9.30	5.30	6
KF-BC-50	KF50	95.20	10.30	5.30	8

## KF 环颈型卡箍螺丝组 KF BULKHEAD CLAMP SETS

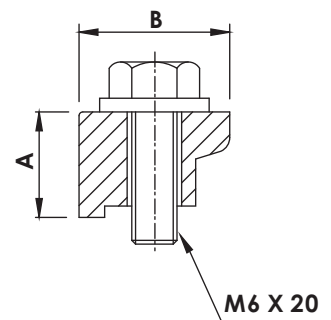
本体为圆棒加工成型 The body is processed and formed from a round bar  
(卡箍强度：最强) (clamp strength: strongest)  
优势：可接受最低直部，体积最小化  
Advantages: lowest straight part acceptable, minimal bulk



Catalogue PN	Size	A	B	C
KF-BCS-16	NW16	KF-BC-16	10-32UNF-15.9L(6PCS)	10-32UNF(6PCS)
KF-BCS-25	NW25	KF-BC-25	10-32UNF-15.9L(6PCS)	10-32UNF(6PCS)
KF-BCS-40	NW40	KF-BC-40	10-32UNF-15.9L(6PCS)	10-32UNF(6PCS)
KF-BCS-50	NW50	KF-BC-50	10-32UNF-15.9L(8PCS)	10-32UNF(8PCS)

## KF 单向夹子螺丝 KF WALL CLAMPS with BOLT

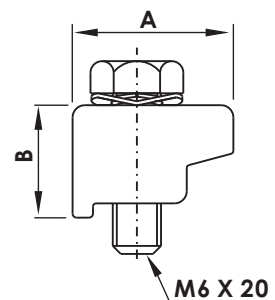
本体为铸造，螺丝为不锈钢 The body is cast, screw is stainless steel  
(卡箍强度：次强) (clamp strength: second strongest)  
优势：可接受最低直部，体积最小化  
Advantages: lowest straight part acceptable, minimal bulk



Catalogue PN	Size	A	B
KF-WC1-1650	KF16~KF50	15.00	20.00

## KF 单向夹子头 KF SINGLE CLAW CLAMP KIT

材质：304/L Material: 304/L  
4PCS IN 1 PACK



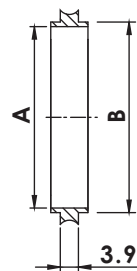
Catalogue PN	Size	A	B
KF-SC-1650	KF16~KF50	20.00	14.00

KF  
DN

# KF Flanges & Fittings

## KF 中心圈 KF CENTERING RINGS

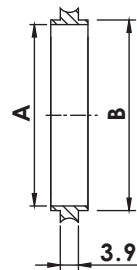
不锈钢304/L Material: 304/L



Catalogue PN	Size	A	B
KF-CRN-10	KF10	10.00	12.00
KF-CRN-16	KF16	16.00	17.00
KF-CRN-25	KF25	25.00	26.00
KF-CRN-40	KF40	40.00	41.00
KF-CRN-50	KF50	50.00	52.00

NOTE: 316/L MATERIAL AVAILABLE ON REQUEST.

## KF 中心圈，镁铝合金 KF CENTERING RINGS, ALUMINUM

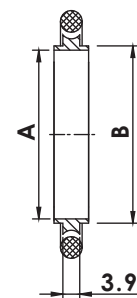


Catalogue PN	Size	A	B
KF-CRN-10-AL	KF10	10.00	12.00
KF-CRN-16-AL	KF16	16.00	17.00
KF-CRN-25-AL	KF25	25.00	26.00
KF-CRN-40-AL	KF40	40.00	41.00
KF-CRN-50-AL	KF50	50.00	52.00

## KF 中心圈O型环 KF CENTERING RINGS with O-RINGS

不锈钢304/L Material: 304/L

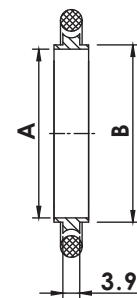
O型环 : FKM · Buna-N或硅胶 O-rings: FKM, Buna-N or silicone



Catalogue PN	Size	A	B
KF-CRO-10	KF10	10.00	12.00
KF-CRO-16	KF16	16.00	17.00
KF-CRO-25	KF25	25.00	26.00
KF-CRO-40	KF40	40.00	41.00
KF-CRO-50	KF50	50.00	52.00

## KF 中心圈O型环，镁铝合金 KF CENTERING RINGS with O-RINGS, ALUMINUM

O型环 : FKM · Buna-N或硅胶 O-rings: FKM, Buna-N or silicone



Catalogue PN	Size	A	B
KF-CRO-10-AL	KF10	10.00	12.00
KF-CRO-16-AL	KF16	16.00	17.00
KF-CRO-25-AL	KF25	25.00	26.00
KF-CRO-40-AL	KF40	40.00	41.00
KF-CRO-50-AL	KF50	50.00	52.00

NOTE: FFKM O-RING MATERIAL AVAILABLE ON REQUEST.

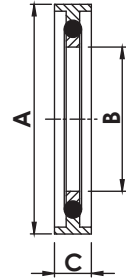
# KF Flanges & Fittings

## KF 中心圈O型环耐压环

### KF CENTERING RINGS with O-RINGS & SPACERS

不锈钢304/L与镁铝合金AL6061 Material: 304/L & Magnesium aluminum alloy AL6061

O型环 : FKM O-rings: FKM



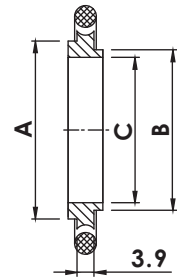
Catalogue PN	Size	A	B	C
KF-CROS-16	KF16	32.50	16.00	7.00
KF-CROS-25	KF25	42.50	25.00	7.00
KF-CROS-40	KF40	57.50	40.00	7.00
KF-CROS-50	KF50	77.50	50.00	7.00

## KF 变径中心圈O型环

### KF ADAPTIVE CENTERING RINGS with O-RINGS

不锈钢304/L Material: 304/L

O型环 : FKM O-rings: FKM



Catalogue PN	Size	A	B	C
KF-CROA-1016	KF10/16	17.00	12.00	10.00
KF-CROA-2025	KF20/25	26.00	22.00	20.00
KF-CROA-3240	KF32/40	41.00	34.00	32.00

## KF 过滤网中心圈O型环

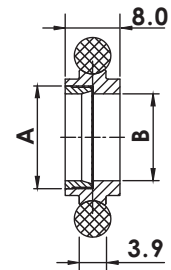
### KF SCREENED CENTERING RINGS with O-RINGS

不锈钢304/L Material: 304/L

不锈钢网密度70目(一平方寸有70孔洞)

O型环 : FKM Stainless steel mesh density 70 mesh (70 holes per square inch)

O-rings: FKM



Catalogue PN	Size	A	B
KF-CROSC-16	KF16	15.00	12.70
KF-CROSC-25	KF25	23.80	21.80
KF-CROSC-40	KF40	38.80	36.80
KF-CROSC-50	KF50	50.00	47.75

NOTE: FFKM O-RING MATERIAL AVAILABLE ON REQUEST.

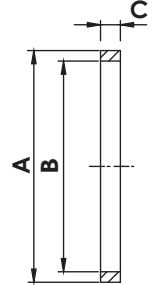
**KF  
DN**

# KF Flanges & Fittings

## KF 耐压环

### KF OVER PRESSURE RINGS

不锈钢304/L Material: 304/L



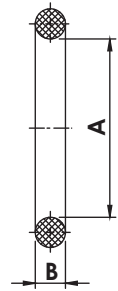
Catalogue PN	Size	A	B	C
KF-OR-10	KF 10	31.80	27.70	3.60
KF-OR-16	KF 16	31.80	29.90	3.60
KF-OR-25	KF 25	41.90	39.10	3.60
KF-OR-40	KF 40	57.20	54.50	3.60
KF-OR-50	KF 50	69.90	67.60	3.60

**KF  
DN**

## KF O型环

### KF REPLACEMENT O-RINGS

FKM



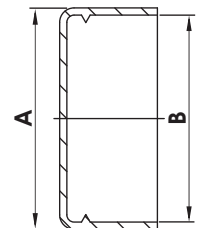
Catalogue PN	Size	A	B
KF-RO-10	KF 10	15.24	5.33
KF-RO-16	KF 16	18.42	5.33
KF-RO-25	KF 25	27.94	5.33
KF-RO-40	KF 40	40.64	5.33
KF-RO-50	KF 50	53.34	5.33

NOTE: FFKM O-RING MATERIAL AVAILABLE ON REQUEST.

## KF 法兰保护盖

### KF PLASTIC CAP

材质: P E Material: PE



Catalogue PN	Size	A	B
KF-PC-1016	KF10/ KF16	32.00	30.00
KF-PC-25	KF25	42.00	40.00
KF-PC-40	KF40	57.00	55.00
KF-PC-50	KF50	77.00	75.00



# KF Flanges & Fittings

## KF 盲法兰

### KF BLANK FLANGES

材质：不锈钢304/L Material: 304/L

Catalogue PN	Size	A	B
KF-BL-10	KF10	30.00	5.10
KF-BL-16	KF16	30.00	5.10
KF-BL-25	KF25	40.00	5.10
KF-BL-40	KF40	55.00	5.10
KF-BL-50	KF50	75.00	5.10

NOTE: 316/L MATERIAL AVAILABLE ON REQUEST.

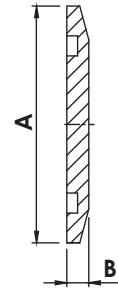


## KF 盲法兰

### KF BLANK FLANGES, ALUMINUM

材质：镁铝合金AL6061 Material: Magnesium aluminum alloy AL6061

Catalogue PN	Size	A	B
KF-BL-10-AL	KF10	30.00	5.10
KF-BL-16-AL	KF16	30.00	5.10
KF-BL-25-AL	KF25	40.00	5.10
KF-BL-40-AL	KF40	55.00	5.10
KF-BL-50-AL	KF50	75.00	5.10



## KF 通径法兰

### KF BORED FLANGES

材质：不锈钢304/L Material: 304/L



Catalogue PN	Size	Diagram	A	B	C	D	E
KF-BF-10x038	KF 10-3/8"	A	30.00	12.20	-	9.65	5.10
KF-BF-16x025	KF16-1/4"	A	30.00	17.20	-	6.50	5.10
KF-BF-16x038	KF16-3/8"	A	30.00	17.20	-	9.65	5.10
KF-BF-16x050	KF16-1/2"	B	30.00	17.20	10.16	12.95	5.10
KF-BF-16x075	KF16-3/4"	B	30.00	17.20	16.51	19.30	4.40
KF-BF-25x025	KF25-1/4"	A	40.00	26.20	-	6.50	5.10
KF-BF-25x038	KF25-3/8"	A	40.00	26.20	-	9.65	5.10
KF-BF-25x050	KF25-1/2"	B	40.00	26.20	10.16	12.95	5.10
KF-BF-25x075	KF25-3/4"	B	40.00	26.20	16.51	19.30	5.10
KF-BF-25x100	KF25-1.0"	B	40.00	26.20	22.88	25.65	4.90
KF-BF-40x025	KF40-1/4"	A	55.00	41.20	-	6.50	5.10
KF-BF-40x038	KF40-3/8"	A	55.00	41.20	-	9.65	5.10
KF-BF-40x050	KF40-1/2"	B	55.00	41.20	10.16	12.95	5.10
KF-BF-40x075	KF40-3/4"	B	55.00	41.20	16.51	19.30	5.10
KF-BF-40x100	KF40-1.0"	B	55.00	41.20	22.88	25.65	5.10
KF-BF-40x150	KF40-1.5"	B	55.00	41.20	35.58	38.35	5.10
KF-BF-50x025	KF50-1/4"	A	75.00	52.20	-	6.50	5.10
KF-BF-50x038	KF50-3/8"	A	75.00	52.20	-	9.65	5.10
KF-BF-50x050	KF50-1/2"	B	75.00	52.20	10.16	12.95	5.10
KF-BF-50x075	KF50-3/4"	B	75.00	52.20	16.51	19.30	5.10
KF-BF-50x100	KF50-1.0"	B	75.00	52.20	22.88	25.65	5.10
KF-BF-50x150	KF50-1.5"	B	75.00	52.20	35.58	38.35	5.10
KF-BF-50x200	KF50-2.0"	B	75.00	52.20	48.26	51.05	5.10

NOTE: 316/L or ALUMINUM MATERIAL AVAILABLE ON REQUEST.

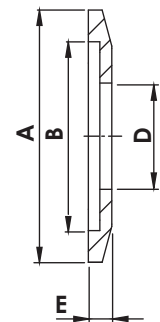


Diagram A

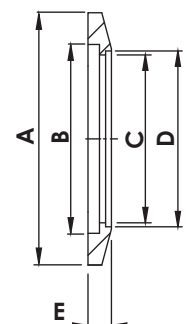


Diagram B

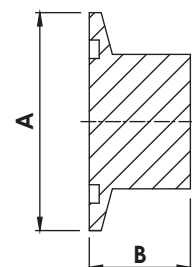
**KF  
DN**

# KF Flanges & Fittings

## KF 盲孔短颈法兰

### KF UNBORED STUB FLANGES

材质：不锈钢304/L Material: 304/L

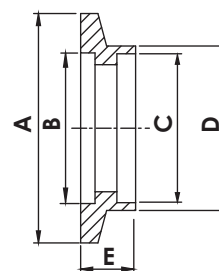


Catalogue PN	Size	A	B
KF-UF-10	KF 10-0.56"L	30.00	14.20
KF-UF-16	KF 16-0.56"L	30.00	14.20
KF-UF-16-1	KF 16-0.75"L	30.00	19.10
KF-UF-25	KF 25-0.47"L	40.00	11.90
KF-UF-25-1	KF 25-0.75"L	40.00	19.10
KF-UF-40	KF 40-0.50"L	55.00	12.70
KF-UF-40-1	KF 40-1.00"L	55.00	25.40
KF-UF-50	KF 50-0.62"L	75.00	15.70
KF-UF-50-1	KF 50-1.00"L	75.00	25.40

## KF 短颈承插焊式法兰

### KF SOCKET WELD FLANGES, SHORT

材质：不锈钢304/L Material: 304/L

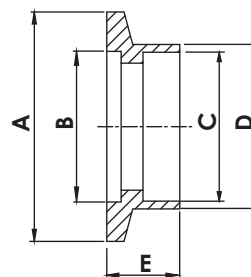


Catalogue PN	Size	A	B	C	D	E
KF-SWS-10	KF10	30.00	12.20	12.90	16.00	6.35
KF-SWS-16	KF16	30.00	17.20	19.30	22.40	6.35
KF-SWS-25	KF25	40.00	26.20	25.70	28.80	6.35
KF-SWS-40	KF40	55.00	41.20	38.40	41.50	6.35
KF-SWS-50	KF50	75.00	52.20	51.10	54.20	6.35

## KF 长颈承插焊式法兰

### KF SOCKET WELD FLANGES, LONG

材质：不锈钢304/L Material: 304/L

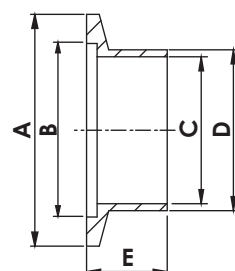


Catalogue PN	Size	A	B	C	D	E
KF-SWL-10	KF10	30.00	12.20	13.00	15.50	12.70
KF-SWL-16	KF16	30.00	17.20	19.30	22.20	12.70
KF-SWL-25	KF25	40.00	26.20	25.90	28.60	12.70
KF-SWL-40	KF40	55.00	41.20	38.60	44.50	12.70
KF-SWL-50	KF50	75.00	52.20	51.30	57.20	12.70

## KF 短颈对接焊式法兰

### KF BUTT WELD STUB FLANGES, SHORT

材质：不锈钢304/L Material: 304/L



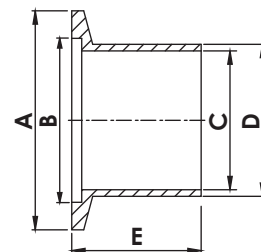
Catalogue PN	Size	A	B	C	D	E
KF-BWS-10	KF10	30.00	12.20	9.40	12.70	12.70
KF-BWS-16	KF16	30.00	12.70	15.70	19.10	12.70
KF-BWS-25	KF25	40.00	26.20	22.10	25.40	12.70
KF-BWS-40	KF40	55.00	41.20	34.80	38.10	19.10
KF-BWS-50	KF50	75.00	52.20	47.50	50.80	19.10

NOTE: 316/L or ALUMINUM MATERIAL AVAILABLE ON REQUEST.

# KF Flanges & Fittings

## KF 长颈对接焊式法兰 KF BUTT WELD STUB FLANGES, LONG

材质：不锈钢304/L Material: 304/L



Catalogue PN	Size	A	B	C	D	E
KF-BWL-10	KF10	30.00	12.20	9.40	12.70	40.00
KF-BWL-1016	K10/16	30.00	17.20	9.40	12.70	40.00
KF-BWL-16	KF16	30.00	17.20	15.75	19.05	40.00
KF-BWL-25	KF25	40.00	26.20	22.10	25.40	40.00
KF-BWL-40	KF40	55.00	41.20	34.90	38.10	40.00
KF-BWL-50	KF50	75.00	52.20	47.60	50.80	40.00

## KF 半短管 KF HALF NIPPLES

材质：不锈钢304/L Material: 304/L

Catalogue PN	Size	Diagram	A	B	C	D	E
KF-HN-10	KF 10-1.25"	A	30.00	12.20	9.40	12.70	31.75
KF-HN-16	KF 16-1.15"	A	30.00	17.20	15.80	19.10	29.21
KF-HN-16-1	KF 16-1.50"	A	30.00	17.20	15.80	19.10	38.10
KF-HN-25	KF 25-2.03"	B	40.00	26.20	22.10	25.40	51.56
KF-HN-25-1	KF 25-2.04"	A	40.00	26.20	22.10	25.40	51.80
KF-HN-40	KF40-2.40"	B	55.00	41.20	34.80	38.10	60.96
KF-HN-40-1	KF40-2.46"	B	55.00	41.20	34.80	38.10	62.50
KF-HN-50	KF50-3.15"	B	75.00	52.20	47.50	50.80	80.01
KF-HN-50-1	KF50-3.21"	B	75.00	52.20	47.50	50.80	81.50

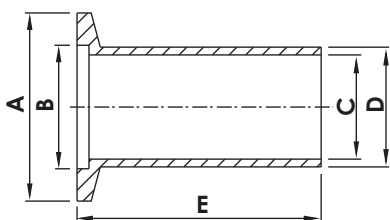


Diagram A  
Machined

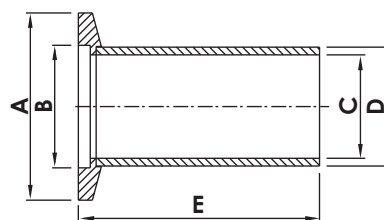


Diagram B  
Welded

NOTE: 316/L or ALUMINUM MATERIAL AVAILABLE ON REQUEST.

**KF  
DN**

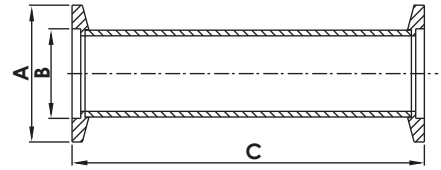
# KF Flanges & Fittings

## KF 短管

### KF FULL NIPPLES

材质：不锈钢304/L Material: 304/L

管表面处理：喷砂 Tube surface: sandblasting



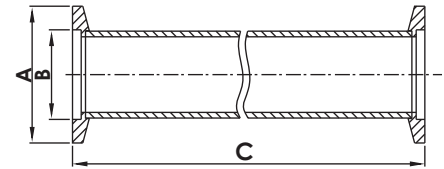
Catalogue PN	Size	A	B	C
KF-FN-10	KF10-2.50"	30.00	12.20	63.50
KF-FN-16	KF16-2.30"	30.00	17.20	58.40
KF-FN-25	KF25-4.00"	40.00	26.20	103.10
KF-FN-40	KF40-4.80"	55.00	41.20	121.90
KF-FN-50	KF50-6.30"	75.00	52.20	160.00

## KF 长式短管

### KF FULL NIPPLES, LONG

材质：不锈钢304/L Material: 304/L

管表面处理：喷砂 Tube surface: sandblasting



Catalogue PN	Size	A	B	C
KF-FNL-16	KF16-12.60"	30.00	17.20	320.00
KF-FNL-25	KF25-12.60"	40.00	26.20	320.00
KF-FNL-40	KF40-12.60"	55.00	41.20	320.00
KF-FNL-50	KF50-12.60"	75.00	52.20	320.00

NOTE: 316/L MATERIAL AVAILABLE ON REQUEST.

NOTE: POLISHED AND ELECTRO- POLISHED TUBE FINISHES AVAILABLE ON REQUEST.

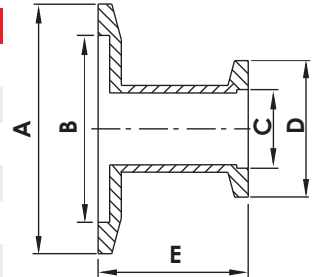
# KF Flanges & Fittings

## KF 直管大小头 KF STRAIGHT REDUCERS

材质：不锈钢304/L Material: 304/L



Catalogue PN	Size	A	B	C	D	E
KF-SRN-25x16	KF25 X KF16	40.00	26.20	17.20	30.00	43.20
KF-SRN-40x16	KF40 X KF16	55.00	41.20	17.20	30.00	43.20
KF-SRN-40x25	KF40 X KF25	55.00	41.20	26.20	40.00	43.20
KF-SRN-50x16	KF50 X KF16	75.00	52.20	17.20	30.00	43.20
KF-SRN-50x25	KF50X KF25	75.00	52.20	26.20	40.00	43.20
KF-SRN-50x40	KF50 X KF40	75.00	52.20	41.20	55.00	43.20

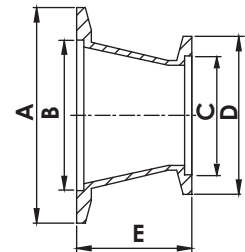


## KF 同心缩管大小头 KF CONICAL REDUCERS

材质：不锈钢304/L Material: 304/L



Catalogue PN	Size	A	B	C	D	E
KF-CRN-25x16	KF25xKF16	40.00	26.20	17.20	30.00	39.90
KF-CRN-40x16	KF40xKF16	55.00	41.20	17.20	30.00	39.90
KF-CRN-40x25	KF40xKF25	55.00	41.20	26.20	40.00	39.90
KF-CRN-50x16	KF50xKF16	75.00	52.20	17.20	30.00	39.90
KF-CRN-50x25	KF50xKF25	75.00	52.20	26.20	40.00	39.90
KF-CRN-50x40	KF50xKF40	75.00	52.20	41.20	55.00	39.90



**KF  
DN**

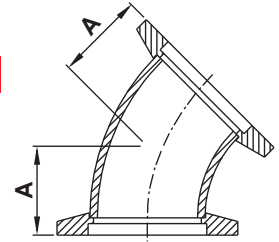
NOTE: 316/L or ALUMINUM MATERIAL AVAILABLE ON REQUEST.  
NOTE: POLISHED AND ELECTRO- POLISHED TUBE FINISHES AVAILABLE ON REQUEST.



# KF Flanges & Fittings

## KF 45° 弯头 KF 45° ELBOWS

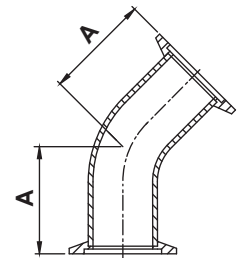
材质：不锈钢304/L Material: 304/L  
管表面处理：喷砂 Tube surface: sandblasting



Catalogue PN	Size	A
KF-45EL-16	KF16	15.65
KF-45EL-25	KF25	19.58
KF-45EL-40	KF40	27.47
KF-45EL-50	KF50	35.36

## KF 45° 直部弯头 KF 45° ELBOWS with TANGENTS

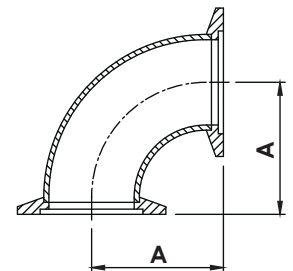
材质：不锈钢304/L Material: 304/L  
管表面处理：喷砂 Tube surface: sandblasting



Catalogue PN	Size	A
KF-45ELT-16	KF16	23.10
KF-45ELT-25-S	KF25-S	28.45
KF-45ELT-25	KF25	33.88
KF-45ELT-40-S	KF40-S	42.67
KF-45ELT-40	KF40	45.10
KF-45ELT-50-S	KF50-S	50.55
KF-45ELT-50	KF50	62.50

## KF 90° 弯头 KF 90° ELBOWS

材质：不锈钢304/L Material: 304/L  
管表面处理：喷砂 Tube surface: sandblasting



Catalogue PN	Size	A
KF-90EL-10	KF10	31.80
KF-90EL-16	KF16	29.20
KF-90EL-25	KF25	41.90
KF-90EL-40	KF40	61.00
KF-90EL-50	KF50	80.00

NOTE: 316/L MATERIAL AVAILABLE ON REQUEST.  
NOTE: POLISHED AND ELECTRO- POLISHED TUBE FINISHES AVAILABLE ON REQUEST.

KF  
DN

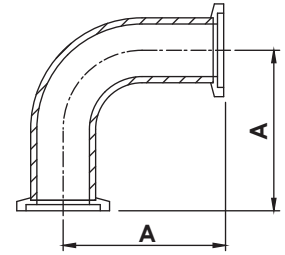
# KF Flanges & Fittings

## KF 90° 直部弯头

### KF 90° ELBOWS with TANGENTS

材质：不锈钢304/L Material: 304/L

管表面处理：喷砂 Tube surface: sandblasting



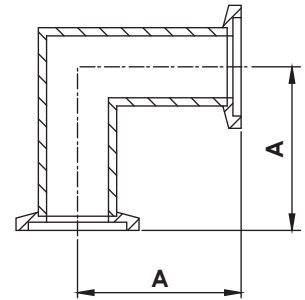
Catalogue PN	Size	A
KF-90ELT-16	KF16	68.58
KF-90ELT-25	KF25	92.46
KF-90ELT-40	KF40	130.05
KF-90ELT-50	KF50	139.95

## KF 90° 直角弯头

### KF 90° MITERED ELBOWS

材质：不锈钢304/L Material: 304/L

管表面处理：喷砂 Tube surface: sandblasting



Catalogue PN	Size	A
KF-MEL-16	KF16	29.21
KF-MEL-16-H	KF16-H	40.00
KF-MEL-25	KF25	50.00
KF-MEL-25-H	KF25-H	51.56
KF-MEL-40	KF40	60.96
KF-MEL-40-H	KF40-H	65.00
KF-MEL-50	KF50	69.84
KF-MEL-50-H	KF50-H	80.01

**K F  
DN**

NOTE: 316/L MATERIAL AVAILABLE ON REQUEST.

NOTE: POLISHED AND ELECTRO- POLISHED TUBE FINISHES AVAILABLE ON REQUEST.

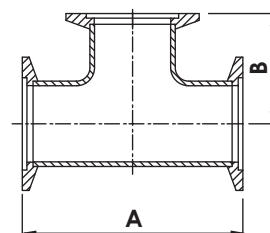
# KF Flanges & Fittings

## KF 同径三通

### KF EQUAL TEES

材质：不锈钢304/L Material: 304/L

管表面处理：喷砂 Tube surface: sandblasting



Catalogue PN	Size	A	B
KF-ET-10	KF10	63.50	31.75
KF-ET-16	KF16	58.40	29.20
KF-ET-16-H	KF16-H	80.00	40.00
KF-ET-25	KF25	100.00	50.00
KF-ET-25-H	KF25-H	102.80	51.40
KF-ET-40	KF40	122.00	61.00
KF-ET-40-H	KF40-H	130.00	65.00
KF-ET-50	KF50	140.00	70.00
KF-ET-50-H	KF50-H	160.00	80.00

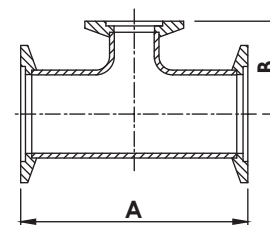
**KF  
DN**

## KF 异径三通

### KF REDUCING TEES

材质：不锈钢304/L Material: 304/L

管表面处理：喷砂 Tube surface: sandblasting



Catalogue PN	Size	A	B
KF-RT-25x16	KF25 x KF16	100.00	27.80
KF-RT-25x16-1	KF25 x KF16	100.00	43.20
KF-RT-25x16-2	KF25 x KF16	103.10	32.25
KF-RT-40x16	KF40 x KF16	121.90	38.85
KF-RT-40x16-1	KF40 x KF16	130.00	34.00
KF-RT-40x16-2	KF40 x KF16	130.00	49.50
KF-RT-40x25	KF40 x KF25	121.90	57.91
KF-RT-40x25-1	KF40 x KF25	130.00	56.40
KF-RT-50x16	KF50 x KF16	140.00	40.10
KF-RT-50x16-1	KF50 x KF16	140.00	55.90
KF-RT-50x16-2	KF50 x KF16	160.00	45.20
KF-RT-50x25	KF50 x KF25	140.00	62.70
KF-RT-50x40	KF50 x KF40	140.00	71.40
KF-RT-50x40-1	KF50 x KF40	160.00	67.31

NOTE: 316/L MATERIAL AVAILABLE ON REQUEST.

NOTE: POLISHED AND ELECTRO- POLISHED TUBE FINISHES AVAILABLE ON REQUEST.

# KF Flanges & Fittings

## KF 同径四通

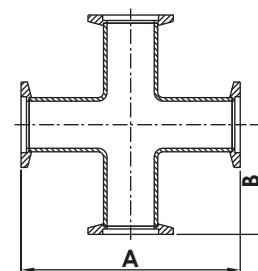
### KF 4-WAY CROSSES

材质：不锈钢304/L Material: 304/L

管表面处理：喷砂 Tube surface: sandblasting



Catalogue PN	Size	A	B
KF-4C-10	KF10	63.50	31.75
KF-4C-16	KF16	58.40	29.20
KF-4C-16-H	KF16-H	80.00	40.00
KF-4C-25	KF25	100.00	50.00
KF-4C-25-H	KF25-H	102.80	51.40
KF-4C-40	KF40	122.00	61.00
KF-4C-40-H	KF40-H	130.00	65.00
KF-4C-50	KF50	140.00	70.00
KF-4C-50-H	KF50-H	160.00	80.00



## KF 异径四通

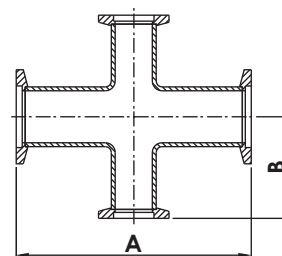
### KF REDUCING 4-WAY CROSSES

材质：不锈钢304/L Material: 304/L

管表面处理：喷砂 Tube surface: sandblasting



Catalogue PN	Size	A	B
KF-4RC-25x16	KF25 x KF16	100.00	43.20
KF-4RC-25x16-H	KF25 x KF16-H	103.12	32.26
KF-4RC-40x16	KF40 x KF16	121.92	38.86
KF-4RC-40x16-H	KF40 x KF16-H	130.00	49.50
KF-4RC-40x25	KF40 x KF25	121.92	57.91
KF-4RC-40x25-H	KF40 x KF25-H	130.00	56.40
KF-4RC-50x16	KF50 x KF16	140.00	55.90
KF-4RC-50x16-H	KF50 x KF16-H	160.02	45.21
KF-4RC-50x25-H	KF50 x KF25-H	140.00	62.70
KF-4RC-50x40	KF50 x KF40	140.00	71.40
KF-4RC-50x40-H	KF50 x KF40-H	160.02	67.31



**KF  
DN**

NOTE: 316/L MATERIAL AVAILABLE ON REQUEST.

NOTE: POLISHED AND ELECTRO- POLISHED TUBE FINISHES AVAILABLE ON REQUEST.

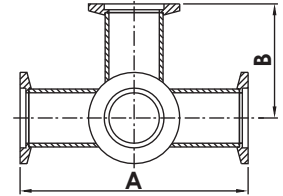
# KF Flanges & Fittings

## KF 五通

### KF 5-WAY CROSSES

材质：不锈钢304/L Material: 304/L

管表面处理：喷砂 Tube surface: sandblasting



Catalogue PN	Size	A	B
KF-5C-16	KF16	80.00	40.00
KF-5C-25	KF25	100.00	50.00
KF-5C-40	KF40	130.00	65.00
KF-5C-50	KF50	140.00	70.00

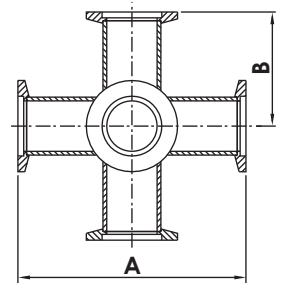
**K F  
D N**

## KF 六通

### KF 6-WAY CROSSES

材质：不锈钢304/L Material: 304/L

管表面处理：喷砂 Tube surface: sandblasting



Catalogue PN	Size	A	B
KF-6C-16	KF16	80.00	40.00
KF-6C-25	KF25	100.00	50.00
KF-6C-40	KF40	130.00	65.00
KF-6C-50	KF50	140.00	70.00

NOTE: 316/L MATERIAL AVAILABLE ON REQUEST.

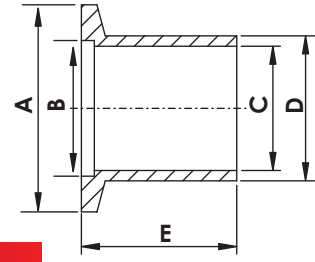
NOTE: POLISHED AND ELECTRO- POLISHED TUBE FINISHES AVAILABLE ON REQUEST.



# DN Flanges & Fittings

## DN 长颈对接焊式法兰,长 26MM DN BUTT WELD STUBS, LENGTH 26MM

\*MATERIAL: 304/L



Catalogue PN	Size	A	B	C	D	E
DN-BW26-10	DN10	30.00	12.20	10.00	14.00	26.00
DN-BW26-16	DN16	30.00	17.20	16.00	20.00	26.00
DN-BW26-20	DN20	40.00	22.20	21.00	25.00	26.00
DN-BW26-25	DN25	40.00	26.20	24.00	28.00	26.00
DN-BW26-32	DN32	55.00	34.20	34.00	38.00	26.00
DN-BW26-40	DN40	55.00	41.20	40.50	44.50	26.00
DN-BW26-50	DN50	75.00	52.20	50.60	57.00	26.00

## DN 长颈对接焊式法兰,长 30MM DN BUTT WELD STUBS, LENGTH 30MM

\*MATERIAL: 304/L

Catalogue PN	Size	A	B	C	D	E
DN-BW30-10	DN10	30.00	12.20	10.00	14.00	30.00
DN-BW30-16	DN16	30.00	17.20	16.00	20.00	30.00
DN-BW30-25	DN25	40.00	26.20	24.00	28.00	30.00
DN-BW30-40	DN40	55.00	41.20	40.50	44.50	30.00
DN-BW30-50	DN50	75.00	52.20	50.60	57.00	30.00

## DN 长颈对接焊式法兰,长 55MM DN BUTT WELD STUBS, LENGTH 55MM

\*MATERIAL: 304/L

Catalogue PN	Size	A	B	C	D	E
DN-BW55-10	DN10	30.00	12.20	10.00	14.00	55.00
DN-BW55-16	DN16	30.00	17.20	16.00	20.00	55.00
DN-BW55-25	DN25	40.00	26.20	24.00	28.00	55.00
DN-BW55-40	DN40	55.00	41.20	40.50	44.50	55.00
DN-BW55-50	DN50	75.00	52.20	50.60	57.00	55.00

## DN 长颈对接焊式法兰,长 70MM DN BUTT WELD STUBS, LENGTH 70MM

\*MATERIAL: 304/L

Catalogue PN	Size	A	B	C	D	E
DN-BW70-10	DN10	30.00	12.20	10.00	14.00	70.00
DN-BW70-16	DN16	30.00	17.20	16.00	20.00	70.00
DN-BW70-25	DN25	40.00	26.20	24.00	28.00	70.00
DN-BW70-40	DN40	55.00	41.20	40.50	44.50	70.00
DN-BW70-50	DN50	75.00	52.20	50.60	57.00	70.00

NOTE: 316/L MATERIAL AVAILABLE ON REQUEST.

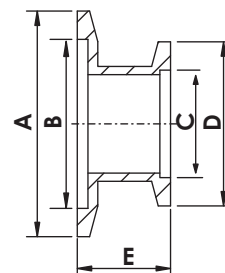
# DN Flanges & Fittings

## DN 直管大小头, 短管 DN STRAIGHT REDUCERS, SHORT

材质：不锈钢304/L Material: 304/L



Catalogue PN	Size	A	B	C	D	E
DN-SRNS-16x10	DN16xDN10	30.00	17.20	12.20	30.00	28.00
DN-SRNS-25x10	DN25xDN10	40.00	26.20	12.20	30.00	28.00
DN-SRNS-25x16	DN25xDN16	40.00	26.20	17.20	30.00	28.00
DN-SRNS-40x10	DN40xDN10	55.00	41.20	12.20	30.00	28.00
DN-SRNS-40x16	DN40xDN16	55.00	41.20	17.20	30.00	28.00
DN-SRNS-40x25	DN40xDN25	55.00	41.20	26.20	40.00	28.00
DN-SRNS-50x16	DN50xDN16	75.00	52.20	17.20	30.00	28.00
DN-SRNS-50x25	DN50xDN25	75.00	52.20	26.20	40.00	28.00
DN-SRNS-50x40	DN50xDN40	75.00	52.20	41.20	55.00	28.00



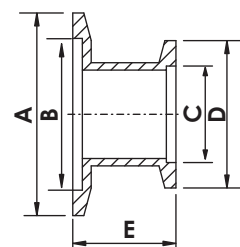
K F  
DN

## DN 直管大小头, 长管 DN STRAIGHT REDUCERS, LONG

材质：不锈钢304/L Material: 304/L



Catalogue PN	Size	A	B	C	D	E
DN-SRNL-25x16	DN25xDN16	40.00	26.20	17.20	30.00	40.00
DN-SRNL-40x16	DN40xDN16	55.00	41.20	17.20	30.00	40.00
DN-SRNL-40x25	DN40xDN25	55.00	41.20	26.20	40.00	40.00
DN-SRNL-50x16	DN50xDN16	75.00	52.20	17.20	30.00	40.00
DN-SRNL-50x25	DN50xDN25	75.00	52.20	26.20	40.00	40.00
DN-SRNL-50x40	DN50xDN40	75.00	52.20	41.20	55.00	40.00

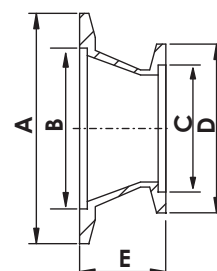


## DN 同心缩管大小头 DN CONICAL REDUCERS

材质：不锈钢304/L Material: 304/L



Catalogue PN	Size	A	B	C	D	E
DN-CRN-25x16	DN25xDN16	40.00	26.20	17.20	30.00	28.00
DN-CRN-40x16	DN40xDN16	55.00	41.20	17.20	30.00	28.00
DN-CRN-40x25	DN40xDN25	55.00	41.20	26.20	40.00	28.00
DN-CRN-50x16	DN50xDN16	75.00	52.40	17.20	30.00	28.00
DN-CRN-50x25	DN50xDN25	75.00	52.40	26.20	40.00	28.00
DN-CRN-50x40	DN50xDN40	75.00	52.40	41.20	55.00	28.00



NOTE: 316/L MATERIAL AVAILABLE ON REQUEST.

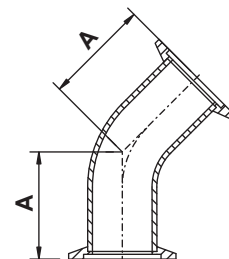
# DN Flanges & Fittings

## DN 45° 直部弯头

### DN 45° ELBOWS WITH TANGENTS

材质：不锈钢304/L Material: 304/L

管表面处理：喷砂 Tube surface: sandblasting



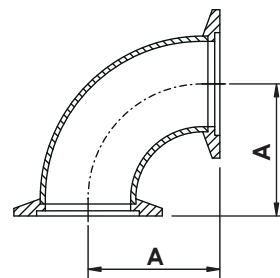
Catalogue PN	Size	A	Tube Size
DN-45ELT-10	DN10	30.00	14.0 X 2.0mmt
DN-45ELT-16	DN16	26.00	20.0 X 1.5mmt
DN-45ELT-25	DN25	32.00	28.0 X 1.5mmt
DN-45ELT-40	DN40	40.00	44.5 X 2.0mmt
DN-45ELT-50	DN50	51.00	54.0 X 2.0mmt

## DN 90° 弯头

### DN 90° ELBOWS

材质：不锈钢304/L Material: 304/L

管表面处理：喷砂 Tube surface: sandblasting



Catalogue PN	Size	A	Tube Size
DN-90EL-10	DN10	30.00	14.0 x 2.0mmt
DN-90EL-16	DN16	40.00	20.0 x 1.5mmt
DN-90EL-25	DN25	50.00	28.0 x 1.5mmt
DN-90EL-40	DN40	65.00	44.5 x 2.0mmt
DN-90EL-50	DN50	70.00	54.0 x 2.0mmt

**K F  
DN**

NOTE: 316/L MATERIAL AVAILABLE ON REQUEST.

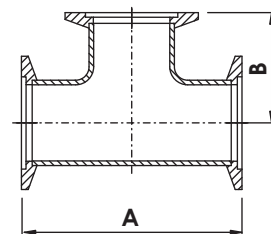
NOTE: POLISHED AND ELECTRO- POLISHED TUBE FINISHES AVAILABLE ON REQUEST.

# DN Flanges & Fittings

## DN 同径三通 DN EQUAL TEES

材质：不锈钢304/L Material: 304/L

管表面处理：喷砂 Tube surface: sandblasting



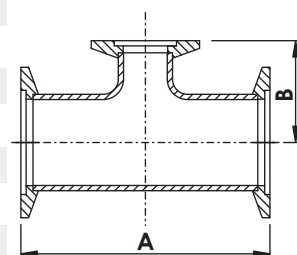
Catalogue PN	Size	A	B	Tube Size
DN-ET-10	DN10	60.00	30.00	14.0 x 2.0mmt
DN-ET-16	DN16	80.00	40.00	20.0 x 1.5mmt
DN-ET-25	DN25	100.00	50.00	28.0 x 1.5mmt
DN-ET-40	DN40	130.00	65.00	44.5 x 2.0mmt
DN-ET-50	DN50	140.00	70.00	54.0 x 2.0mmt
DN-ET-57	DN57	140.00	70.00	57.0 x 3.0mmt

**K F  
DN**

## DN 异径三通 DN REDUCING TEES

材质：不锈钢304/L Material: 304/L

管表面处理：喷砂 Tube surface: sandblasting



Catalogue PN	Size	A	B	Tube Size 1	Tube Size 2
DN-RT-25x10	DN25 x DN10	100.00	40.00	28.0 x 1.5mmt	14.0 x 2.0mmt
DN-RT-25x16	DN25 x DN16	100.00	40.00	28.0 x 1.5mmt	20.0 x 1.5mmt
DN-RT-40x16	DN40 x DN16	130.00	40.00	44.5 x 2.0mmt	20.0 x 1.5mmt
DN-RT-40x25	DN40 x DN25	130.00	50.00	44.5 x 2.0mmt	28.0 x 1.5mmt
DN-RT-50x16	DN50 x DN16	140.00	50.00	20.0 x 1.5mmt	20.0 x 1.5mmt
DN-RT-50x25	DN50 x DN25	140.00	65.00	54.0 x 2.0mmt	28.0 x 1.5mmt
DN-RT-50x40	DN50 x DN40	140.00	65.00	54.2 x 2.0mmt	44.5 x 2.0mmt
DN-RT-57x16	DN57 x DN16	140.00	50.00	57.0 x 3.0mmt	20.0 x 1.5mmt
DN-RT-57x25	DN57 x DN25	140.00	65.00	57.0 x 3.0mmt	28.0 x 1.5mmt
DN-RT-57x40	DN57 x DN40	140.00	65.00	57.0 x 3.0mmt	44.5 x 2.0mmt

NOTE: 316/L MATERIAL AVAILABLE ON REQUEST.

NOTE: POLISHED AND ELECTRO- POLISHED TUBE FINISHES AVAILABLE ON REQUEST.

# DN Flanges & Fittings

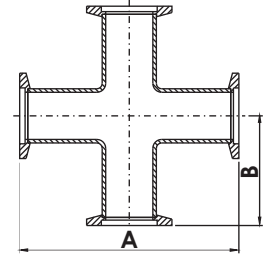
## DN 同径四通 DN 4-WAY CROSSES

材质：不锈钢304/L Material: 304/L

管表面处理：喷砂 Tube surface: sandblasting



Catalogue PN	Size	A	B	Tube Size
DN-4C-10	DN10	60.00	30.00	14.0 x 2.0mmt
DN-4C-16	DN16	80.00	40.00	20.0 x 1.5mmt
DN-4C-25	DN25	100.00	50.00	28.0 x 1.5mmt
DN-4C-40	DN40	130.00	65.00	44.5 x 2.0mmt
DN-4C-50	DN50	140.00	70.00	54.0 x 2.0mmt
DN-4C-57	DN57	140.00	70.00	57.0 x 3.0mmt



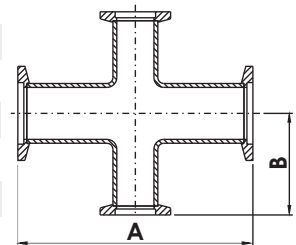
## DN 异径四通 DN REDUCING 4-WAY CROSSES

材质：不锈钢304/L Material: 304/L

管表面处理：喷砂 Tube surface: sandblasting



Catalogue PN	Size	A	B	Tube Size 1	Tube Size 2
DN-4RC-25x10	DN25 x DN10	100.00	40.00	28.0 x 1.5mmt	14.0 x 2.0mmt
DN-4RC-25x16	DN25 x DN16	100.00	40.00	28.0 x 1.5mmt	20.0 x 1.5mmt
DN-4RC-40x10	DN40 x DN10	130.00	40.00	44.5 x 2.0mmt	14.0 x 2.0mmt
DN-4RC-40x16	DN40 x DN16	130.00	40.00	44.5 x 2.0mmt	20.0 x 1.5mmt
DN-4RC-40x25	DN40 x DN25	130.00	50.00	44.5 x 2.0mmt	28.0 x 1.5mmt
DN-4RC-50x16	DN50 x DN16	140.00	50.00	54.0 x 2.0mmt	20.0 x 1.5mmt
DN-4RC-50x25	DN50 x DN25	140.00	50.00	54.0 x 2.0mmt	28.0 x 1.5mmt
DN-4RC-50x40	DN50 x DN40	140.00	65.00	54.0 x 2.0mmt	44.5 x 2.0mmt
DN-4RC-57x16	DN57 x DN16	140.00	50.00	57.0 x 3.0mmt	20.0 x 1.5mmt
DN-4RC-57x25	DN57 x DN25	140.00	50.00	57.0 x 3.0mmt	28.0 x 1.5mmt
DN-4RC-57x40	DN57 x DN40	140.00	65.00	57.0 x 3.0mmt	44.5 x 2.0mmt



NOTE: 316/L MATERIAL AVAILABLE ON REQUEST.

NOTE: POLISHED AND ELECTRO- POLISHED TUBE FINISHES AVAILABLE ON REQUEST.

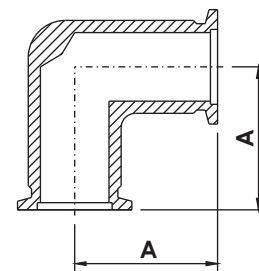
**K F  
DN**



# DN Machined Fittings

## DN 90° 弯头,机械加工 DN 90° ELBOW, MACHINED

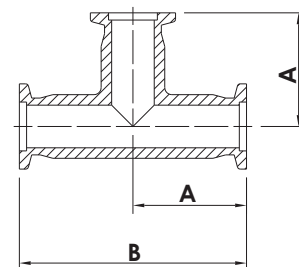
材质：镁铝合金AL6061 Material: Magnesium aluminum alloy AL 6061



Catalogue PN	Size	A
DN-90ELMA-16-AL	KF16	40.00
DN-90ELMA-25-AL	KF25	50.00
DN-90ELMA-40-AL	KF40	65.00
DN-90ELMA-50-AL	KF50	70.00

## DN 同径三通,机械加工 DN EQUAL TEES, MACHINED

材质：镁铝合金AL6061 Material: Magnesium aluminum alloy AL 6061

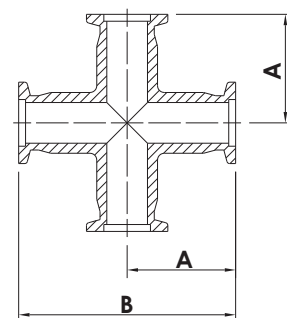


**K F  
DN**

Catalogue PN	Size	A	B
DN-ETMA-16-AL	KF16	40.00	80.00
DN-ETMA-25-AL	KF25	50.00	100.00
DN-ETMA-40-AL	KF40	65.00	130.00
DN-ETMA-50-AL	KF50	70.00	140.00

## DN 同径四通,机械加工 DN 4-WAY CROSSES, MACHINED

材质：镁铝合金AL6061 Material: Magnesium aluminum alloy AL 6061



Catalogue PN	Size	A	B
DN-4CMA-16-AL	KF16	40.00	80.00
DN-4CMA-25-AL	KF25	50.00	100.00
DN-4CMA-40-AL	KF40	65.00	130.00
DN-4CMA-50-AL	KF50	70.00	140.00

# 富东机械制造(香港)有限公司

Fudong Machinery Manufacture (HK) Co, Ltd

地址: 广东省深圳市龙岗区吉华街道甘坑社区甘坑同富裕工业区 2 号 3 栋 601A1-6F

网址: <https://www.fudongmachinery.com> Email: jack@fudongmachinery.com

电话: 0755-2220 6257 传真: 0755-2220 4982

---

ShenZhen Office: 601A1-6F, Building A3, No.2, Tongfuyu Industrial Park, Gankeng, Jihua Subdistrict,

Longgang District, Shenzhen City, Guangdong Province, China

Website: <https://www.fudongmachinery.com> Email: jack@fudongmachinery.com

Tel: +86-755-2220 6257 Fax: +86-755-2220 4982

