

ADAPTORS



Fudong Machinery
Manufacture (HK) Co, Ltd

ADAPTORS

KF/CF 直管转接头

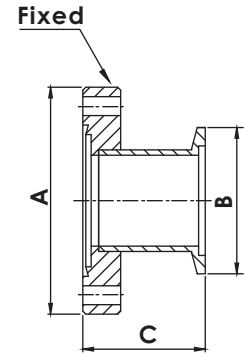
KF to CF FLANGE ADAPTORS

材质：不锈钢304/L Material: 304/L

管表面处理：喷砂 Tube surface: sandblasting



Catalogue PN	Size	A	B	C
AD-KFCF-10x133	KF10xCF1.33	CF1.33	KF 10	44.50
AD-KFCF-16x133	KF16xCF1.33	CF1.33	KF 16	44.50
AD-KFCF-16x275	KF16xCF2.75	CF2.75	KF 16	45.20
AD-KFCF-25x212	KF25xCF2.12	CF2.12	KF 25	44.50
AD-KFCF-25x275	KF25xCF2.75	CF2.75	KF 25	45.20
AD-KFCF-40x275	KF40xCF2.75	CF2.75	KF 40	45.20
AD-KFCF-40x338	KF40xCF3.38	CF3.38	KF 40	45.70
AD-KFCF-50x133	KF50xCF1.33	CF1.33	KF 50	49.50
AD-KFCF-50x275	KF50xCF2.75	CF2.75	KF 50	49.50
AD-KFCF-50x338	KF50xCF3.38	CF3.38	KF 50	45.70
AD-KFCF-50x450	KF50xCF4.50	CF4.50	KF 50	49.50



ISO-K/CF 直管转接头

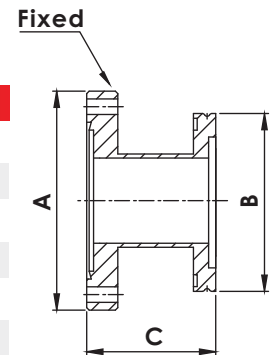
ISO to CF FLANGE ADAPTORS

材质：不锈钢304/L Material: 304/L

管表面处理：喷砂 Tube surface: sandblasting



Catalogue PN	Size	A	B	C
AD-ISOCF-63x450	ISO63xCF4.50	CF4.50	ISO63	110.00
AD-ISOCF-80x462	ISO80xCF4.62	CF4.62	ISO80	110.00
AD-ISOCF-80x600	ISO80xCF6.00	CF6.00	ISO80	110.00
AD-ISOCF-100x600	ISO100xCF6.00	CF6.00	ISO100	111.00
AD-ISOCF-160x800	ISO160xCF8.00	CF8.00	ISO160	113.00
AD-ISOCF-200x1000	ISO200xCF10.00	CF10.00	ISO200	113.00



ISO-K/KF 直管转接头

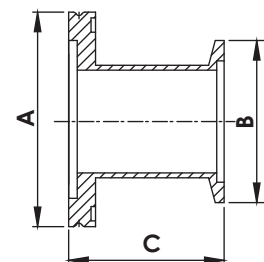
ISO to KF FLANGE ADAPTORS

材质：不锈钢304/L Material: 304/L

管表面处理：喷砂 Tube surface: sandblasting



Catalogue PN	Size	A	B	C
AD-ISOKF-63x25	ISO63-KF25	ISO63	KF25	46.50
AD-ISOKF-63x40	ISO63-KF40	ISO63	KF40	46.30
AD-ISOKF-63x50	ISO63-KF50	ISO63	KF50	46.30
AD-ISOKF-80x40	ISO80-KF40	ISO80	KF40	46.30
AD-ISOKF-80x50	ISO80-KF50	ISO80	KF50	46.30
AD-ISOKF-100x40	ISO100-KF40	ISO100	KF40	46.30
AD-ISOKF-100x50	ISO100-KF50	ISO100	KF50	46.30



NOTE: 316/L MATERIAL AVAILABLE ON REQUEST.

NOTE: POLISHED AND ELECTRO-POLISHED TUBE FINISHES AVAILABLE ON REQUEST.

ADAPTORS

ISO / CF 同心缩径转接头

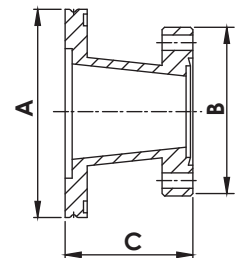
ISO to CF FLANGE CONICAL ADAPTORS

材质：不锈钢304/L Material: 304/L

管表面处理：喷砂 Tube surface: sandblasting



Catalogue PN	Size	A	B	C
AD-C-ISOCF-63x275	ISO63-CF2.75	ISO63	CF2.75	71.90
AD-C-ISOCF-63x338	ISO63-CF3.38	ISO63	CF3.38	72.30
AD-C-ISOCF-63x462	ISO63-CF4.62	ISO63	CF4.62	105.50
AD-C-ISOCF-63x600	ISO63-CF6.00	ISO63	CF6.00	109.50
AD-C-ISOCF-80x275	ISO80-CF2.75	ISO80	CF2.75	103.70
AD-C-ISOCF-80x338	ISO80-CF3.38	ISO80	CF3.38	104.10
AD-C-ISOCF-80x450	ISO80-CF4.50	ISO80	CF4.50	107.90
AD-C-ISOCF-80x600	ISO80-CF6.00	ISO80	CF6.00	109.50
AD-C-ISOCF-100x338	ISO100-CF3.38	ISO100	CF3.38	104.10
AD-C-ISOCF-100x450	ISO100-CF4.50	ISO100	CF4.50	107.90
AD-C-ISOCF-100x462	ISO100-CF4.62	ISO100	CF4.62	105.50



AD

KF / CF 同心缩径转接头

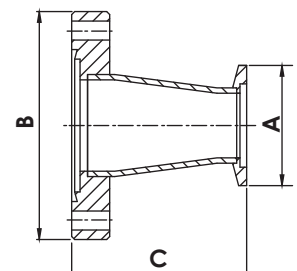
KF to CF FLANGE CONICAL ADAPTORS

材质：不锈钢304/L Material: 304/L

管表面处理：喷砂 Tube surface: sandblasting



Catalogue PN	Size	A	B	C
AD-C-KFCF-16x212	KF16-CF2.12	KF 16	CF2.12	42.90
AD-C-KFCF-16x275	KF16-CF2.75	KF 16	CF2.75	69.30
AD-C-KFCF-25x133	KF25-CF1.33	KF 25	CF1.33	43.15
AD-C-KFCF-25x275	KF25-CF2.75	KF 25	CF2.75	69.30
AD-C-KFCF-25x338	KF25-CF3.38	KF25	CF3.38	69.90
AD-C-KFCF-40x133	KF40-CF1.33	KF 40	CF1.33	68.55
AD-C-KFCF-40x212	KF40-CF2.12	KF 40	CF2.12	68.30
AD-C-KFCF-40x338	KF40-CF3.38	KF 40	CF3.38	69.90
AD-C-KFCF-40x450	KF40-CF4.50	KF 40	CF4.50	73.70
AD-C-KFCF-40x462	KF40-CF4.62	KF 40	CF4.62	103.10
AD-C-KFCF-50x212	KF50-CF2.12	KF 50	CF2.12	68.30
AD-C-KFCF-50x275	KF50-CF2.75	KF 50	CF2.75	69.30
AD-C-KFCF-50x450	KF50-CF4.50	KF 50	CF4.50	73.70
AD-C-KFCF-50x462	KF50-CF4.62	KF 50	CF4.62	103.10
AD-C-KFCF-50x600	KF50-CF6.00	KF 50	CF6.00	106.90



NOTE: 316/L MATERIAL AVAILABLE ON REQUEST.

NOTE: POLISHED AND ELECTRO- POLISHED TUBE FINISHES AVAILABLE ON REQUEST.

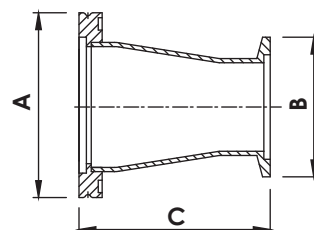
ISO-K/KF 同心缩径转接头 ISO to KF FLANGE CONICAL ADAPTORS

材质：不锈钢304/L Material: 304/L

管表面处理：喷砂 Tube surface: sandblasting



Catalogue PN	Size	A	B	C
AD-C-ISOKF-63x40	ISO63-KF40	ISO63	KF40	70.40
AD-C-ISOKF-63x50	ISO63-KF50	ISO63	KF50	70.40
AD-C-ISOKF-80x40	ISO80-KF40	ISO80	KF40	102.20
AD-C-ISOKF-80x50	ISO80-KF50	ISO80	KF50	102.20
AD-C-ISOKF-100x50	ISO100-KF50	ISO100	KF50	102.20

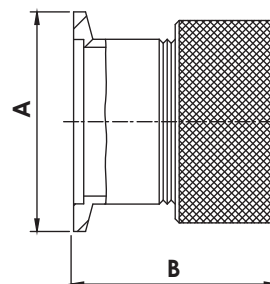


KF 快速接管接头 KF FLANGES to QUICK COUPLINGS with VITON O-RINGS

材质：不锈钢304/L Material: 304/L



Catalogue PN	Size	Tube Size	A	B
AD-QC-KF10x050	NW10-1/2"	1/2"	30.00	38.10
AD-QC-KF16x025	NW16-1/4"	1/4"	30.00	35.60
AD-QC-KF16x050	NW16-1/2"	1/2"	30.00	38.10
AD-QC-KF16x075	NW16-3/4"	3/4"	30.00	45.70
AD-QC-KF25x050	NW25-1/2"	1/2"	40.00	38.10
AD-QC-KF25x062	NW25-5/8"	5/8"	40.00	43.20
AD-QC-KF25x075	NW25-3/4"	3/4"	40.00	45.70
AD-QC-KF25x100	NW25-1.0"	1.0"	40.00	50.80
AD-QC-KF25x112	NW25-1 1/8"	1-1/8"	40.00	50.80
AD-QC-KF40x050	NW40-1/2"	1/2"	55.00	37.60
AD-QC-KF40x075	NW40-3/4"	3/4"	55.00	45.70
AD-QC-KF40x100	NW40-1.0"	1.0"	55.00	50.80
AD-QC-KF40x112	NW40-1 1/8"	1-1/8"	55.00	50.80
AD-QC-KF40x125	NW40-1 1/4"	1-1/4"	55.00	50.80
AD-QC-KF40x138	NW40-1 3/8"	1-3/8"	55.00	53.30
AD-QC-KF40x150	NW40-1 1/2"	1-1/2"	55.00	61.00
AD-QC-KF50x050	NW50-1/2"	1/2"	75.00	38.10
AD-QC-KF50x075	NW50-3/4"	3/4"	75.00	45.70
AD-QC-KF50x100	NW50-1.0"	1.0"	75.00	50.80
AD-QC-KF50x112	NW50-1 1/8"	1-1/8"	75.00	50.80
AD-QC-KF50x150	NW50-1 1/2"	1-1/2"	75.00	61.00
AD-QC-KF50x200	NW50-2.0"	2.0"	75.00	61.00



ADAPTORS

KF/VCR 母接头

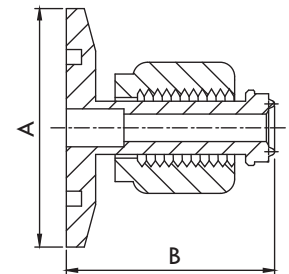
KF FLANGES to FEMALE VCRS

材质：KF接头不锈钢304/L，VCR母接头 316/L

Material: KF connector stainless steel 304/L, VCR female connector 316/L



Catalogue PN	Size	A	B
AD-KFVCRF-16x025	KF16-1/4"	30.00	37.10
AD-KFVCRF-16x038	KF16-3/8"	30.00	41.90
AD-KFVCRF-16x050	KF16-1/2"	30.00	41.90
AD-KFVCRF-25x025	KF25-1/4"	40.00	37.10
AD-KFVCRF-25x038	KF25-3/8"	40.00	41.90
AD-KFVCRF-25x050	KF25-1/2"	40.00	41.90
AD-KFVCRF-25x075	KF25-3/4"	40.00	55.40
AD-KFVCRF-40x025	KF40-1/4"	55.00	37.10
AD-KFVCRF-40x038	KF40-3/8"	55.00	41.90
AD-KFVCRF-40x050	KF40-1/2"	55.00	41.90
AD-KFVCRF-40x075	KF40-3/4"	55.00	55.40
AD-KFVCRF-50x025	KF50-1/4"	75.00	37.10
AD-KFVCRF-50x038	KF50-3/8"	75.00	41.90
AD-KFVCRF-50x050	KF50-1/2"	75.00	41.90
AD-KFVCRF-50x075	KF50-3/4"	75.00	55.40



KF/VCR 公接头

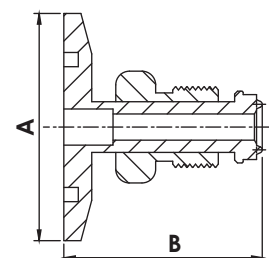
KF FLANGES to MALE VCRS

材质：KF接头不锈钢304/L，VCR公接头 316/L

Material: KF connector stainless steel 304/L, VCR male connector 316/L



Catalogue PN	Size	A	B
AD-KFVCRM-16x025	KF16x1/4"	30.00	37.10
AD-KFVCRM-16x038	KF16x3/8"	30.00	41.90
AD-KFVCRM-16x050	KF16x1/2"	30.00	41.90
AD-KFVCRM-25x025	KF25x1/4"	40.00	37.10
AD-KFVCRM-25x038	KF25x3/8"	40.00	41.90
AD-KFVCRM-25x050	KF25x1/2"	40.00	41.90
AD-KFVCRM-25x075	KF25x-3/4"	40.00	55.40
AD-KFVCRM-40x025	KF40x1/4"	55.00	37.10
AD-KFVCRM-40x038	KF40x3/8"	55.00	41.90
AD-KFVCRM-40x050	KF40x1/2"	55.00	41.90
AD-KFVCRM-40x075	KF40x3/4"	55.00	55.40
AD-KFVCRM-50x025	KF50x1/4"	75.00	37.10
AD-KFVCRM-50x038	KF50x3/8"	75.00	41.90
AD-KFVCRM-50x050	KF50x1/2"	75.00	41.90
AD-KFVCRM-50x075	KF50x3/4"	75.00	55.40

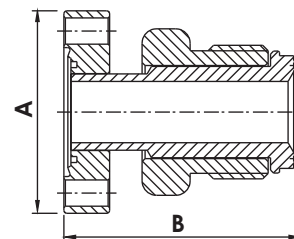


CF/VCR 公接头

CF FLANGES to MALE VCRS

材质：CF接头不锈钢304/L，VCR母接头 316/L

Material: CF connector stainless steel 304/L, VCR female connector 316/L



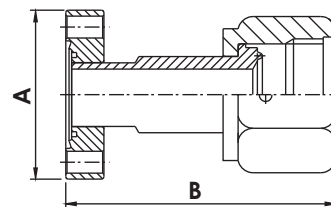
Catalogue PN	Size	A	B
AD-CFVCRM-133x025	CF16x1/4"	CF1.33"	36.30
AD-CFVCRM-133x038	CF16x3/8"	CF1.33"	39.27
AD-CFVCRM-133x050	CF16x1/2"	CF1.33"	39.27
AD-CFVCRM-275x025	CF35x1/4"	CF2.75"	38.61
AD-CFVCRM-275x038	CF35x3/8"	CF2.75"	43.41
AD-CFVCRM-275x050	CF35x1/2"	CF2.75"	43.41

CF/VCR 母接头

CF FLANGES to FEMALE VCRS

材质：CF接头不锈钢304/L，VCR母接头 316/L

Material: CF connector stainless steel 304/L, VCR female connector 316/L



Catalogue PN	Size	A	B
AD-CFVCRF-133x025	CF16x1/4"	CF1.33"	36.30
AD-CFVCRF-133x038	CF16x3/8"	CF1.33"	39.27
AD-CFVCRF-133x050	CF16x1/2"	CF1.33"	39.27
AD-CFVCRF-275x025	CF35x1/4"	CF2.75"	38.61
AD-CFVCRF-275x038	CF35x3/8"	CF2.75"	43.41
AD-CFVCRF-275x050	CF35x1/2"	CF2.75"	43.41

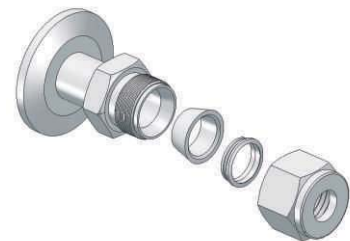
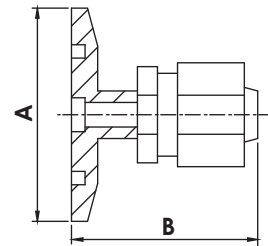
KF 双卡套接头

KF FLANGES to TWO-FERRULE FITTINGS

材质：KF接头不锈钢304/L，双卡套接头 316/L
Material: KF fitting stainless steel 304/L, double ferrule fitting 316/L



Catalogue PN	Size	A	B
AD-KFSWG-10x025	KF10-1/4"	30.00	33.30
AD-KFSWG-16x025	KF16-1/4"	30.00	39.40
AD-KFSWG-16x038	KF16-3/8"	30.00	41.40
AD-KFSWG-16x050	KF16-1/2"	30.00	50.00
AD-KFSWG-25x025	KF25-1/4"	40.00	39.40
AD-KFSWG-25x038	KF25-3/8"	40.00	41.40
AD-KFSWG-25x050	KF25-1/2"	40.00	50.00
AD-KFSWG-25x075	KF25-3/4"	40.00	52.80
AD-KFSWG-25x100	KF25-1.0"	40.00	65.70
AD-KFSWG-40x025	KF40-1/4"	55.00	39.40
AD-KFSWG-40x038	KF40-3/8"	55.00	41.40
AD-KFSWG-40x050	KF40-1/2"	55.00	50.00
AD-KFSWG-40x075	KF40-3/4"	55.00	52.80
AD-KFSWG-40x100	KF40-1.0"	55.00	65.70
AD-KFSWG-50x025	KF50-1/4"	75.00	39.40
AD-KFSWG-50x038	KF50-3/8"	75.00	41.40
AD-KFSWG-50x050	KF50-1/2"	75.00	50.00
AD-KFSWG-50x075	KF50-3/4"	75.00	52.80
AD-KFSWG-50x100	KF50-1.0"	75.00	65.70



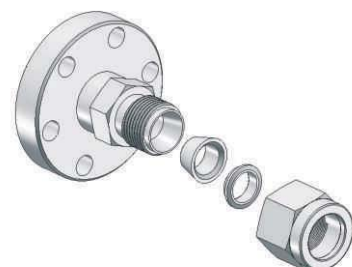
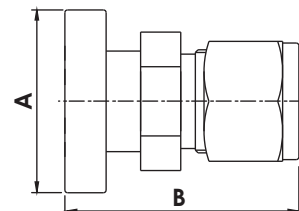
CF 双卡套接头

CF FLANGES to TWO-FERRULE FITTINGS

材质：CF接头不锈钢304/L，双卡套接头 316/L
Material: CF fitting stainless steel 304/L, double ferrule fitting 316/L



Catalogue PN	Size	A	B
AD-CFSWG-133x050	CF133-1/2"	CF1.33"	43.18
AD-CFSWG-133x025	CF133-1/4"	CF1.33"	34.80
AD-CFSWG-133x038	CF133-3/8"	CF1.33"	42.05
AD-CFSWG-275x100	CF275-1.0"	CF2.75"	67.51
AD-CFSWG-275x050	CF275-1/2"	CF2.75"	46.41
AD-CFSWG-275x025	CF275-1/4"	CF2.75"	38.81
AD-CFSWG-275x075	CF275-3/4"	CF2.75"	55.81
AD-CFSWG-275x038	CF275-3/8"	CF2.75"	42.91



ADAPTORS

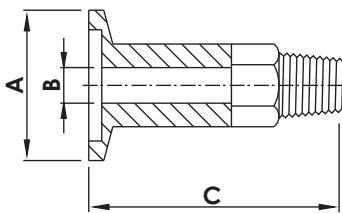


Diagram A

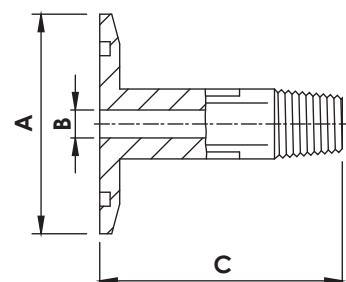


Diagram B

KF 管公牙接头

KF FLANGES to MALE PIPE ADAPTORS

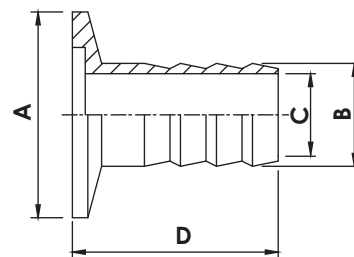
材质：不锈钢304/L Material: 304/L

Catalogue PN	Size - NPT	A	B	C	Diagram
AD-KFNPTM-16x012	KF16-1/8 NPT	30.00	4.70	40.00	A
AD-KFNPTM-16x025	KF16-1/4 NPT	30.00	7.10	50.00	A
AD-KFNPTM-25x012	KF25-1/8 NPT	40.00	4.70	40.00	B
AD-KFNPTM-25x025	KF25-1/4 NPT	40.00	7.10	50.00	B
AD-KFNPTM-25x050	KF25-1/2 NPT	40.00	11.90	75.00	B
AD-KFNPTM-25x075	KF25-3/4 NPT	40.00	15.90	75.00	B
AD-KFNPTM-40x025	KF40-1/4 NPT	55.00	7.10	50.00	B
AD-KFNPTM-40x050	KF40-1/2 NPT	55.00	11.90	75.00	B
AD-KFNPTM-40x075	KF40-3/4 NPT	55.00	15.90	75.00	B
AD-KFNPTM-50x025	KF50-1/4 NPT	75.00	7.10	50.00	B
AD-KFNPTM-50x050	KF50-1/2 NPT	75.00	11.90	75.00	B
AD-KFNPTM-50x075	KF50-3/4 NPT	75.00	15.90	75.00	B

KF 软管接口

KF FLANGES to HOSE NOZZLES

材质：不锈钢304/L Material: 304/L



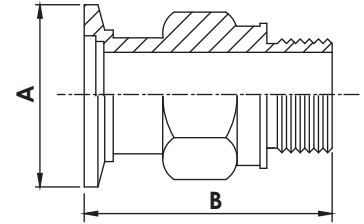
Catalogue PN	Size	A	B	C	D
AD-HS-KF10x008M	KF10-8	30.00	8.00	4.00	40.00
AD-HS-KF10x012M	KF10-12	30.00	12.00	8.00	40.00
AD-HS-KF16x008M	KF16-8	30.00	8.00	4.00	40.00
AD-HS-KF16x012M	KF16-12	30.00	12.00	8.00	40.00
AD-HS-KF25x008M	KF25-8	40.00	8.00	4.00	40.00
AD-HS-KF25x012M	KF25-12	40.00	12.00	8.00	40.00
AD-HS-KF25x016M	KF25-16	40.00	16.00	12.00	40.00
AD-HS-KF25x020M	KF25-20	40.00	20.00	16.00	40.00
AD-HS-KF40x012M	KF40-12	55.00	12.00	8.00	40.00
AD-HS-KF40x016M	KF40-16	55.00	16.00	12.00	40.00
AD-HS-KF40x020M	KF40-20	55.00	20.00	16.00	40.00
AD-HS-KF40x025M	KF40-25	55.00	25.00	20.00	40.00
AD-HS-KF50x025M	KF50-25	75.00	25.00	20.00	40.00

NOTE: 316/L MATERIAL AVAILABLE ON REQUEST.

ADAPTORS

KF 活塞式泵接头 WELCH PUMP ADAPTORS

材质：不锈钢304/L Material: 304/L



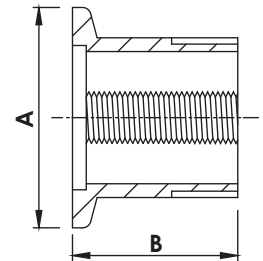
Catalogue PN	Size	A	B
AD-WP-062	KF16-WP1	30.00	45.00
AD-WP-075	KF16-WP2	30.00	65.00
AD-WP-100	KF25-WP1	40.00	70.10
AD-WP-150	KF40-WP1	55.00	65.00
AD-WP-175	KF40-WP2	55.00	65.30

KF/NPT 母牙接头 KF FLANGES to NPT ADAPTORS

材质：不锈钢304/L Material: 304/L

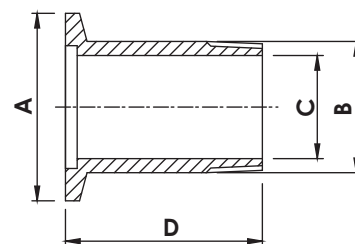


Catalogue PN	Size	A	B
AD-KFNPTF-10x012	NW10 1/8"NPT	30.00	19.10
AD-KFNPTF-10x025	NW10 1/4"NPT	30.00	19.10
AD-KFNPTF-16x012	NW16 1/8"NPT	30.00	19.10
AD-KFNPTF-16x025	NW16 1/4"NPT	30.00	19.10
AD-KFNPTF-25x012	NW25 1/8"NPT	40.00	19.10
AD-KFNPTF-25x025	NW25 1/4"NPT	40.00	19.10
AD-KFNPTF-25x050	NW25 1/2"NPT	40.00	25.40
AD-KFNPTF-25x038	NW25 3/8"NPT	40.00	19.10
AD-KFNPTF-40x012	NW40 1/8"NPT	55.00	25.40
AD-KFNPTF-40x025	NW40 1/4"NPT	55.00	25.40
AD-KFNPTF-40x050	NW40 1/2"NPT	55.00	25.40
AD-KFNPTF-40x075	NW40 3/4"NPT	55.00	25.40
AD-KFNPTF-50x012	NW50 1/8"NPT	75.00	25.40
AD-KFNPTF-50x025	NW50 1/4"NPT	75.00	25.40
AD-KFNPTF-50x050	NW50 1/2"NPT	75.00	25.40
AD-KFNPTF-50x075	NW50 3/4"NPT	75.00	25.40



NOTE: 316/L MATERIAL AVAILABLE ON REQUEST.

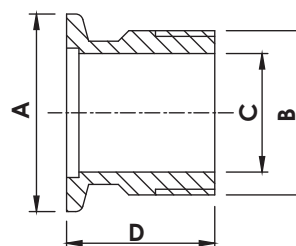
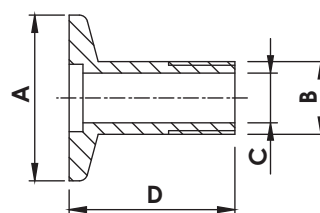
ADAPTORS



KF/BSPT公牙接头 BSPT ADAPTORS

材质：不锈钢304/L Material: 304/L

Catalogue PN	Size	A	B	C	D	BSPT
AD-KFBSPT-10x025	DN10-1/4"	30.00	13.16	9.00	30.00	1/4"x19BSPT
AD-KFBSPT-10x038	DN10-3/8"	30.00	16.66	10.00	30.00	3/8"x19BSPT
AD-KFBSPT-16x050	DN16-1/2"	30.00	20.96	16.00	30.00	1/2"x14BSPT
AD-KFBSPT-25x038	DN25-3/8"	40.00	16.66	10.00	30.00	3/8"x19BSPT
AD-KFBSPT-25x075	DN25-3/4"	40.00	26.44	20.00	30.00	3/4"x14BSPT
AD-KFBSPT-25x100	DN25-1.0"	40.00	33.25	24.00	30.00	1.0"x11BSPT
AD-KFBSPT-40x125	DN40-1.25"	55.00	41.91	35.00	30.00	1.25"x11BSPT
AD-KFBSPT-40x150	DN40-1.5"	55.00	47.80	41.00	30.00	1.5"x11BSPT
AD-KFBSPT-50x200	DN50-2.0"	75.00	59.61	51.00	30.00	2.0"x11BSPT



KF/BSPT公牙接头 BSP ADAPTORS

材质：不锈钢304/L Material: 304/L

KF25-1.0" & KF40-1.5"

Catalogue PN	Size	A	B	C	D	BSP
AD-KFBSP-10x025	DN10-1/4"	30.00	13.16	9.00	30.00	1/4"x19BSP
AD-KFBSP-10x038	DN10-3/8"	30.00	16.66	10.00	30.00	3/8"x19BSP
AD-KFBSP-16x025	DN16-1/4"	30.00	13.16	9.00	30.00	1/4"x19BSP
AD-KFBSP-16x050	DN16-1/2"	30.00	20.96	16.00	30.00	1/2"x14BSP
AD-KFBSP-25x050	DN25-1/2"	40.00	20.96	16.00	30.00	1/2"x14BSP
AD-KFBSP-25x075	DN25-3/4"	40.00	26.44	20.00	30.00	3/4"x14BSP
AD-KFBSP-25x100	DN25-1.0"	40.00	33.25	24.00	30.00	1.0"x11BSP
AD-KFBSP-40x025	DN40-1/4"	55.00	13.16	9.00	30.00	1/4"x19BSP
AD-KFBSP-40x050	DN40-1/2"	55.00	20.96	16.00	30.00	1/2"x14BSP
AD-KFBSP-40x125	DN40-1 1/4"	55.00	41.91	35.00	30.00	1.25"x11BSP
AD-KFBSP-40x150	DN40-1 1/2"	55.00	47.80	41.00	30.00	1.5"x11BSP
AD-KFBSP-50x200	DN50-2.0"	75.00	59.61	51.00	35.00	2.0"x11BSP

NOTE: 316/L MATERIAL AVAILABLE ON REQUEST.

AD

富东机械制造(香港)有限公司

Fudong Machinery Manufacture (HK) Co, Ltd

地址: 广东省深圳市龙岗区吉华街道甘坑社区甘坑同富裕工业区 2 号 3 栋 601A1-6F

网址: <https://www.fudongmachinery.com> Email: jack@fudongmachinery.com

电话: 0755-2220 6257 传真: 0755-2220 4982

ShenZhen Office: 601A1-6F, Building A3, No.2, Tongfuyu Industrial Park, Gankeng, Jihua Subdistrict,
Longgang District, Shenzhen City, Guangdong Province, China

Website: <https://www.fudongmachinery.com> Email: jack@fudongmachinery.com

Tel: +86-755-2220 6257 Fax: +86-755-2220 4982

